



# EXPERIENCE EXCELLENCE

# CONTENTS

- From the chairperson's desk
- Our Mission
- Our Vision
- Our Core values
- Products
- Gallery
- Organisation chart
- Our Partners

# FROM THE CHAIRPERSON'S DESK

It gives me immense delight to state that in less than a decade since it came into existence, Ozone Me Automatic Doors has created a significant impression in the region. Today, with a pioneering spirit and association with prestigious projects, Ozone Me has transcended geographical boundaries.

As a market leader in the UAE, Ozone Me is synonymous with premium quality Automatic Doors. The company's portfolio includes several of the region's top-class Automatic door projects.

Even while achieving steady growth, we have nurtured a vision to provide a 'solid backbone to build a modern society'. This has constantly inspired us to produce Automated Products that efficiently support the dynamics and demands of Warehouses, Residences, and other construction initiatives.

As we surge ahead with our expansion plans, we stay committed to delivering quality along with new chapters of success.

AS ONE OF UAE'S SUCCESSFUL COMPANIES DEALING WITH DIFFERENT ENGINEERING AND MANAGEMENT SUPPORT SERVICES OF DOORS PROVIDING FIELD, IS COMMITTED TO PROVIDE THE HIGHEST QUALITY PRODUCTS WITH LONG PROFESSIONAL EXPERIENCE, UNIQUE DESIGNS AND ADVANCED OPERATING SYSTEM. OUR ENGINEERS AND TECHNICIANS ARE HIGHLY SKILLED TO DELIVER FASHIONABLE MASTER PIECES PRODUCTS TO HIGHLIGHT YOUR FACILITIES WITH BEAUTY.

## OUR MISSION

To provide our clients, businesses or houses owners, with a mixture of professional, fashionable, durable, and high functional system doors. We promise to provide a sustainable wide range of services, high quality products, and maintain our clients trust by providing them comprehensive solutions that meets their needs and requirements. Our clients satisfaction will be always our ultimate goal.

## OUR VISION

Ozone Me Automatic Doors , backed with latest designs, technologies, and equipments, has clear vision goals. To implement the best standards doors installing with unique, professional, sustainable services on time. Anticipate and satisfy peoples desires, needs and requirements. Ozone Me Automatic Doors target is to bring Middle East a portfolio of doors services Industry, seeking the path to make the difference in this field.

## OUR CORE VALUES

Ozone Me Automatic Doors values stand on integrity, professionalism, quality and safety. We believe in,

- Our client's requirements, needs, safety always on the top of our priority.
- Friendship with community and commercial partners is very valuable; we do value the friendly and social environment.
- Client's projects should be well taken care of throughout the whole process.
- Make the difference, through commitment to deliver highly customized and personalized performance.

# PRODUCTS & SERVICES

OZONE ME AUTOMATIC DOORS IS WELL-KNOWN IN THE SECTOR OF MAINTENANCE, REPAIR & NEW INSTALLATION OF THE FOLLOWING PRODUCTS AND INSTALLATION DISPENSED WITH QUALITY ASSURANCE.

## AREA OF EXPERTISES

- Industrial Sectional overhead doors
- Residential Garage doors
- Roller Shutters
- High Speed Doors
- Traffic Barriers
- Automatic Sliding Gates & Swing Gates
- Sliding Glass Door Automation
- Dock Levellers
- Manual Loading Ramps
- Car park shades
- Awnings

The Company offers a comprehensive service portfolio, the design of which is particularly tailored to provide maximum flexibility and adaptability to provide solutions to satisfy most of the many varied customer driven needs.

The market place today demands a competitively priced service, which satisfies a requirement for high standards of quality, reliability of performance, with low life-cycle maintenance costs. Our services are engineered with superior quality parts and

materials utilising the latest techniques, which can then be implemented on site by our fully trained and specialist teams of engineers.

When you choose Ozone ME, we can promise you the best service, premium quality spares and a call response of 24/7 and a swift mobilisation.

To assist you in determining which of our services meets with your particular requirements, we would refer you to our technically trained sales team.

# SECTIONAL OVERHEAD DOORS



Sectional doors can accommodate a wide range of applications including warehouses, service stations, fire stations, restaurants, and many others. They can be used on any kind of doorway and interior architecture. Sectional doors do not require much space inside a room, and hardly take up any space when installed outside. They offer many glazing options and can be equipped with a pedestrian pass door in many cases. Emergency

manual override is provided as standard, to allow operation in case of power failure.

Sectional Overhead Doors are comprised of a series of horizontal panels ranging in height from 400mm to 600mm hinged together. They run in a track system that allows the door to open up vertically, through a curve, and then horizontally along the ceiling. The doors use a torsion spring system

that allows the door to be balanced for use by hand or for automatic operation. Sectional Overhead Doors are available in a "Standard" or "Low" headroom configuration

In our range, we have manually and motorized solutions. For the motorized solution, we offer 3 or single phase motors with gearbox. All controls are low voltage and besides open/close buttons an emergency stop button is always standard.







## RESIDENTIAL GARAGE DOOR

Sectional garage doors are utterly convenient, offer maximum security and allow best possible use of the space. They are comprised of individual elements, so-called sections, connected by hinges, which make it possible to roll the door up or down vertically and to slide it conveniently underneath the ceiling without it swinging outwards in front of the garage and thus taking up space.

So you gain additional space in front of the garage, where you might want to park a second car, for example. And garages located near roads or pavements do not put pedestrians at risk and the traffic keeps flowing. Garage doors with electrical operators always leave the full passage height clear – which is ideal for tall vehicles, such as SUVs or vans.

Appearance-wise, sectional garage doors leave nothing to be desired, either: high-quality materials, top-quality processing and a wide variety of additional fittings give each garage an individual look – in keeping with the architecture of the house and your personal taste.

## WHY OPT FOR A SECTIONAL GARAGE DOOR?

Because it is utterly convenient, offers maximum security and allows best possible use of the space. The principle behind it is as ingenious as it is simple: Sectional garage doors are comprised of individual elements, so-called sections, connected by hinges, which make it possible to roll the door up vertically and slide it conveniently underneath the ceiling without it swinging

outwards in front of the garage and thus taking up space.

Appearance-wise, sectional garage doors leave nothing to be desired, either: high-quality materials, top-quality processing and a wide variety of additional fittings give each garage an individual look – in keeping with the architecture of the house and your personal taste.



### MORE SPACE IN FRONT OF THE GARAGE

Unlike an up-and-over door, a sectional garage door doesn't swing out, which means you can make use of every last inch of space in front of the garage – to park a second car, for example.

And garages located near roads or pavements do not put pedestrians at risk and the traffic keeps flowing.

### FOR EVERY VEHICLE

The full passage height can always be used in a sectional garage door with electrical operator. When replacing an up-and-over door with a sectional garage door, the passage width becomes even larger, because the sectional garage door is typically mounted behind the opening.

There is also more room inside the garage – making it ideal for high vehicles like jeeps or vans – due to the fact that the door sections open vertically while conveniently rolling upwards and then underneath the ceiling in order to save space.

We offer a wide range of typical sizes and a variety of installation options for sectional doors, in order to satisfy the most sophisticated requirements. We are continuously working on the design to make sure our doors look modern and up-to-date.

# INDUSTRIAL SECTIONAL OVERHEAD DOORS

Insulated sectional overhead doors are manufactured to suit individual openings for all types of commercial and industrial buildings where the need for energy conservation is desired. Most commonly used for warehouses, commercial buildings, industries, logistical applications, etc.

Doors are electrically and manually operated and we assist the customers from the design aspects to the installation of these doors and provide round the clock maintenance

Various types of installation are possible according to the site conditions. Standard lift, low lift, high Lift, Vertical Lift.

1. Optional windows, Pass door, various locking systems, Safety systems available upon request
2. Customers can choose from various designs of panels and finishes.
3. All Doors are manufactured to the European Standards



## ALUMINIUM GLAZED FULL VISION GARAGE DOORS

In this type of door the whole surface is constructed from Full Vision panels. The advantage of using transparent fillings is more natural light in the building and a clear view inside and out. In addition to the clear acrylic and polycarbonate fillings the panels can also be equipped with safety glass, mesh or combinations thereof. The Full Vision door gives each building a luxurious appearance.

Full vision panels are aluminum hollow profiles with vertical center posts and a filling of your choice. The fillings are clamped to the inside with a white frame that consists of polythene and rubber. Full Vision panels can also be combined with insulated sandwich panels. It is also possible to fit these panels with no filling at all.

Improve natural light inlet and aesthetics without compromising stability with attractive, glazed overhead sectional industrial doors.

Glazed overhead sectional doors are an industrial door with a difference; visually appealing and highly practical the glazed sections improve natural light inlet and visibility.

The natural choice where product demonstration is a priority, the glazing arrangement benefits from the added stability of a 44mm thick aluminium tubular frame, which makes Glazed doors a practical door system for entrances where industrial and/or commercial traffic must pass. Windows arranged in a 'grid' formation can be complemented by insulated solid panels to further enhance stability. Although all rows can be glazed, the most common arrangement of the Glazed doors sees the bottom row 'infilled', making it both easier to clean and more resistant to scratches and general wear and tear Glazing arrangement.

The number of rows and columns of the Glazed doors is based entirely on the width and height of the door, which is divided equally creating the grid arrangement. Wide range of opening

As with any overhead sectional door, the Glazed doors opens vertically into the roof/ceiling, maximising useable space in and around the opening. Running on tracks, the door rolls up and over. Track arrangements are decided by factoring the available space directly above the door opening and immediately inside the facility.



# ROLLING SHUTTERS

## ROLLING SHUTTERS

Rolling shutters are manufactured as horizontal slats hinged together. These shutters are either manual operated or electrically operated. Their applications include warehouses, factories, storage applications, malls, shop fronts, stadiums, garages, plant rooms, hospitals etc.

All parts are powder coated to selected RAL colours as per the customer's requirements.

Types available:



## SINGLE SKIN

The heavy duty shutters ideally caters for industrial and commercial buildings like distribution warehouses, shop fronts, garages, manufacturing facilities and shopping malls, car park entrances and high rise buildings. It is designed for durability and to withstand high volume usage. Cost effective and simple design catered for back-end and external usage.

*Available in Aluminium and GI*



## DOUBLE SKIN

Double skin rolling shutters are ideal for areas where energy conservation is of prime concern, such as Warehouses, distribution centres, garages/factories, equipment noise partitioning, paint spray booths, maintenance buildings and storage facilities.

We manufacture Double skin shutter of the following kinds

- Fire Rated/ Non Fire Rated Steel Rolling Shutters
- Aluminium Roller Shutters





## GRILLED SHUTTERS

Safe, secure but still on show, Ideal for internal use. They are also available in a range of sizes to suit your premises. From top to bottom, the security roller grilles are designed and manufactured to work for you. They are designed to provide a perfect balance of security, visibility and ventilation. These are light but strong and allow air ventilation.

*The grilled shutters can be used both indoors and outdoors such as staircase, garage, Shops.*



## POLYCARBONATE SHUTTERS

The polycarbonate roller shutters of Ozone Me are constructed with high quality of transparent crystal clear polycarbonate non-breakable links using latest technology. The shutter is manufactured from interlocking polycarbonate links and aluminium or steel hollow tubes or flat bars. Our polycarbonate links will not fade because of the UV resistant coating, therefore our transparent roller shutters will provide an unobstructed view for long years. The bottom bar of the shutter supplied with weather seal rubber to prevent from the dust.

The polycarbonate transparent curtain ensures 80% transparency. Thus these provide security and transparency suitable for advertising products while shops are closed. The polycarbonate shutter comes in Electrical and manual version.

*The applications of these shutters are – shopping malls, hypermarkets, jewellery shops etc.*



## WINDOW SHUTTERS

The window shutters are easy to operate, greaseless, low noise, keyless and low maintenance. The security window shutter was designed in light of the rising crime rate and obstruction during emergency escape among residential homes and commercial premises. The window shutter is also carefully designed to ensure that shutters can be easily accepted and blend in residential settings. In case of power failure, the shutter can be drawn with a manual winding device or a back-up battery can be installed to cater for emergency escape.



## PERFORATED SHUTTERS

Perforated roller shutters provide a most economical method of providing a secure closure to large or small openings. The shutters are strong and have a long life with little maintenance required. These shutters with perforation holes allow minimal visibility and air ventilation.



# HIGH SPEED DOORS

## HIGH SPEED ROLL UP DOORS

High-speed doors are usually used wherever goods traffic occurs and where the doors have to fulfil special requirements. In the food and beverage industry, or Medical industry for example, special climatic conditions have to prevail; short opening and closing times reduce cooling loss, avoid airflow and enable a smooth operating procedure.

High speed roll up doors are used in supermarkets, shopping malls, food processing industries, laboratories, cold storages, warehouses, hospitals, airports, hotels, etc.



## HIGH SPEED FOLD UP DOORS

High Speed Fold Up Door has been developed looking for a reliable product with limited running costs. It's composed by perimeter self-supporting frame in galvanized steel and a PVC curtain reinforced with horizontal steel bars. High Speed Fold Up doors suitable for all kind of industries, for internal and external applications. It's designed for big openings and for a long life and it's the right solution in case of strong wind and depressions.

Standard equipment comprises every part needed for its installation as well as a complete kit for its best functionality and user safety. High speed foldup doors are delivered with a factory pre-cabled electrical system plus connector block, motor/board cables, photocells and accessories already positioned.



# SPIRAL INSULATED INDUSTRIAL DOORS

Spiral insulated industrial doors are new, technologically advanced industrial doors designed to better separate different working areas, characterised by a different acoustic and thermal intensity or intended for different uses. These doors are extremely versatile.

Spiral industrial doors are the ideal solution for:

- All those sectors requiring the partition of different working environments
  - Refrigeration
  - Any type of industry that requires air flow between different environments
- Features & Benefits
- Excellent quality, reliability and safety, as stated by our patents and certificates
  - Great versatility, flexibility and structural strength

- CSI certificates
- Reduced overall dimensions, thanks to the curved profile of our roll-up doors
- Small footprint
- Noiseless opening and closing system
- High thermal conductivity
- Wind resistance
- Designed to solve different industrial logistics problems

- No ceiling anchor, unlike traditional sectional doors
- Simple design
- No extraordinary maintenance required, just the ordinary maintenance required by the rules in force
- Easy and fast handling operations (means, materials and people)
- High-quality packaging with the use of polystyrene boxes





# PARKING MANAGEMENT SYSTEMS

## PARKING MANAGEMENT SYSTEMS

Growing economy in many developing countries have fostered high disposable income among population which has given rise to increase in number of vehicle purchase. This has led to sharp increase in the number of vehicles on road in recent years.

Passenger and goods carrier vehicles contribute to the most of the numbers of vehicles compared to as compared other types. Increases in number of vehicles have given rise to huge traffic congestion thereby leading to serious parking issues in many countries.



## GATE BARRIERS

Automatic boom barrier offers security at the exit and the entry points of industrial unit, offices, corporate houses, residential areas, parking lots, toll tax plazas etc. Automatic barrier can be used to successfully control pedestrian and vehicle traffic. It can be used achieve better security.



## ACCESS CONTROLS

Electronic access control uses computers to solve the limitations of mechanical locks and keys. A wide range of credentials can be used to replace mechanical keys. The electronic access control system grants access based on the credential presented. When access is granted, the door is unlocked for a predetermined time and the transaction is recorded. When access is refused, the door remains locked and the attempted access is recorded. The system will also monitor the door and alarm if the door is forced open or held open too long after being unlocked.



# SLIDING AND SWING GATES

## SLIDING AND SWING GATES

Motorized sliding gates are gates which use a ground mounted track for the gate wheels to move on. Tracked sliding gates can have larger opening widths. A pedestrian gate can be combined with these type of gates or a separate pedestrian gate can be built. We can produce motorized sliding gates as per client's requirements.

The same can be done in the case of swing gates as well. We can design according to the clients requirements and the fabrication can be done as per design approvals



# LOADING BAY DOCKING EQUIPMENTS

Docking systems are used in loading bays to load and unload goods. They are commonly found in commercial, industrial buildings and warehouses. Docking system consists of overhead doors, dock shelters, dock levellers, dock seals, indicator lights and vehicle restraints.

## DOCK LEVELLER

Dock Levelers are the crucial part of your loading bay area. Usage of dock leveler aids in fast loading and unloading of goods at warehouse, moreover is also important from safety and security view. Dock leveler acts as bridge between loading bay area and truck, height difference between truck and bay area is bridged and material movement can be carried out smoothly between warehouse and truck. Operation of dock leveler is very easy, unskilled labor can use perform operation with ease.

Types of dock levellers are :

### 1. HINGED LIP DOCK LEVELERS

Hinged Lip Dock Levelers permit the dock to join with the container bed, thus making it convenient to drive straight on and off with forklift trucks etc. The self-cleaning lip hinging arrangement does not recollect tosh with automatic end-of-run, so as to keep the 25 mm safety distance between the folded lip and assembly as per EN 1398 & EN 349.





## 2. TELESCOPIC DOCK LEVELERS

Dock leveller with telescopic lip is the most efficient device, which enables access of a forklift from the warehouse to the truck bed when loading/unloading. It is used when there is need of exact positioning of the lip on the truck bed. After activation, the deck rises and the lip slides ahead, then the deck lowers until the lip rests on the truck bed. After loading/ unloading is completed, the deck rises, the lip slides in and the dock leveller returns to its original position.



### 3. EDGE OF DOCK LEVELERS

It has a capacity of 6000 kg and is suitable for use with all types of loading equipment from manual pallet trucks to fork trucks.

The open hinge lip construction, carries a lifetime guarantee and has a solid welded connection between the lip plate and the beams under the deck to ensure the lip angle of 7.5° will be maintained.

It is extremely important when loading / unloading vehicles with bed heights above dock level, to ensure that the lip always lays flat on the vehicle floor to avoid the tripping hazard.



## VEHICLE RESTRAINTS

In order to keep a truck or trailer stationed at the dock, a restraining force up to 35000 lbs can be used. They protect against unscheduled departures and unwanted movement of the trailers. They require minimal maintenance.



## WHEEL GUIDES

Wheel guides are used for quick and precise parking of trucks in a dock for preventing damages to the dock or the walls. They are designed to minimize possible contact with the truck wheel rim.



## LOADING BRIDGES

These are manual dock levellers with out motor and can be operated manually by hand . These can be movable or fixed according to the requirement.



## DOCK BUMPERS

The dock bumpers provide safe approach of trucks to the loading place and prevent damage to the walls of the loading/unloading bay. The bumpers are made of high impact resistance rubber which increases their wear resistance and durability.



## DOCK SHELTERS

Dock shelters are designed in such a way that they accommodate a broad range of trailer and doorway variations while granting unobstructed access to the trailer interior for fast and efficient loading and unloading. When a truck is parked against the dock, the shelter eliminates the gap between the building and the open trailer doors, keeping out wind, rain, and other airborne hazards and ensuring employee comfort and safety.

### 1. RETRACTABLE DOCK SHELTERS

Classic model for installation when cargo traffic is moderate. The top and side sheets cover tightly the truck body and ensure sealing.



## 2. INFLATABLE DOCK SHELTERS

Wheel guides are used for quick and precise parking of trucks in a dock for preventing damages to the dock or the walls. They are designed to minimize possible contact with the truck wheel rim.





# SLIDING DOORS

## INDUSTRIAL SLIDING DOORS

These kinds of doors can be installed in places with a very large opening where roller shutter or sectional doors are not feasible. Our sliding doors can withstand winds and is suitable for harsh weather conditions.



**WE AT OZONE ME PROVIDE CUSTOM  
TAILORED SOLUTIONS FOR SLIDING  
DOORS THAT ARE WIND RESISTANT  
AND THAT CAN BE EITHER OPERATED  
VIA MOTOR OR MANUALLY**

## **GLASS SLIDING DOOR**

The automatic sliding door systems provides superior performance and a wide range of innovative solutions to meet the needs of the most demanding environments. From hospital entrances to retail applications, the smooth, quiet operation and versatile configurations make the automatic sliding door system ideal for any application.



SHADES



## AWNINGS, CANOPIES, WINDOW BLINDS.

Fabric canopies and awnings create comfortable, attractive outdoor areas for people to gather, while staying protected from the sun. Not to mention, fabric structures are great during inclement weather, and are easier and more economical to maintain and build than wood structures and comparable masonry. In addition, canopies and awnings protect carpets, drapes, and furniture from fading due to UV Rays.

Some of our customers might worry if their deck or backyard is the right size and shape for our awnings and canopies, but our erudite team of designers have come up with the most innovative ways of creating tailored solutions that work for your outdoor space. We provide a range of decorative designs and colors in easy-to-maintain fabrics to let you coordinate your awnings with the indoor décor. We use only the most durable fabrics that can withstand the elements, while offering beauty and utility to your outdoor spaces.

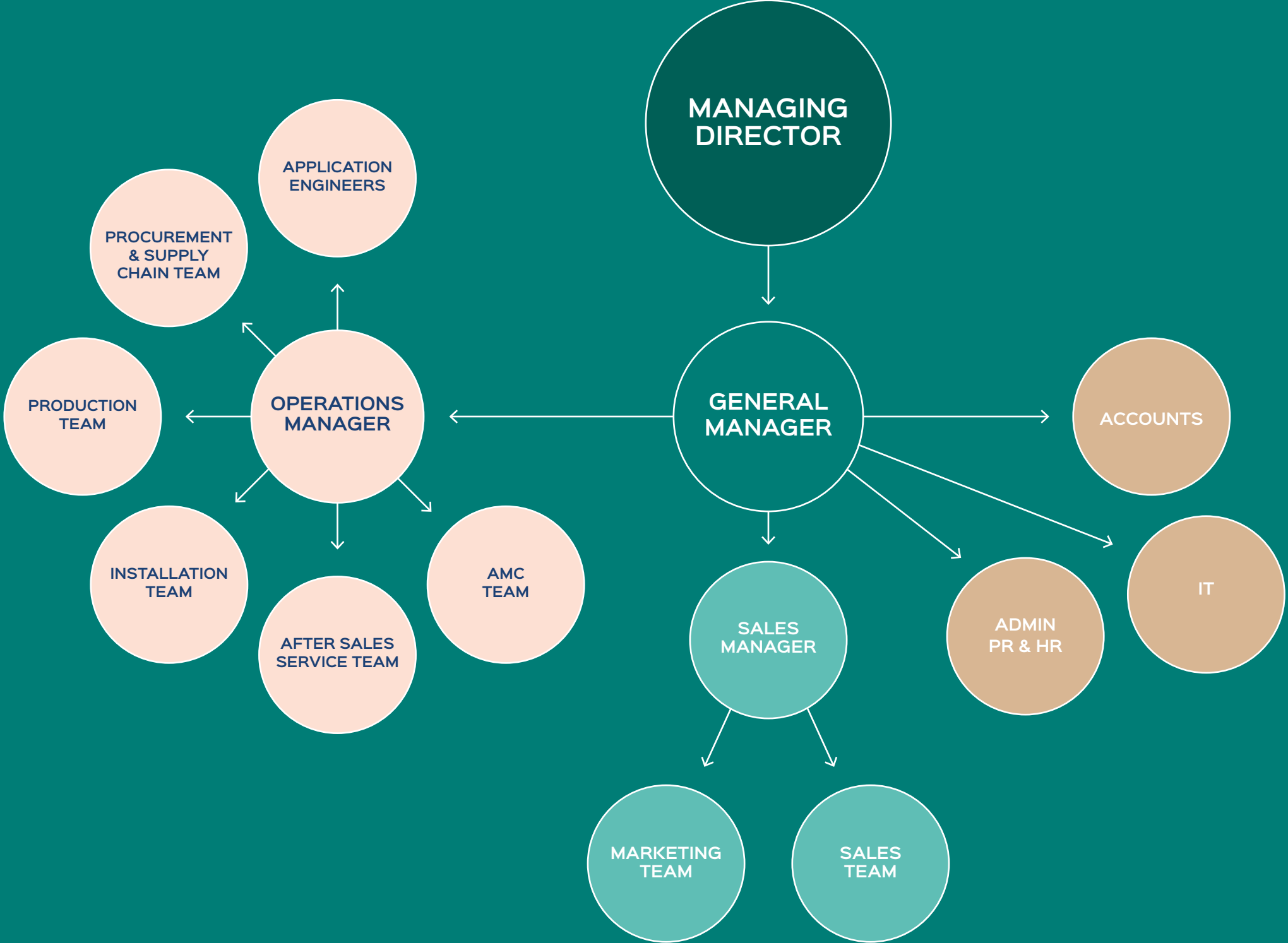
## CAR PARKING SHADES

We specialize in the design, manufacture, and installation of a wide array of applications to suit your Car Parking Shade requirements. From fully waterproof structures to basic shading paraphernalia, our Car parking shades are widely appreciated by our clients for negligible maintenance and easy installation. Be it Net, PVC, OTFE, Acrylic, K-span, GRP, or Aluminum Louvers, our products are available in various dimensions and customized sizes, catering to the individual needs of our clients.

Our team of designers have extensive experience in the field and work with the most up-to-the-date software, analysis, patterning, and form finding to provide you with the most viable and cost-effective solutions. What makes us outshine other car parking shade manufacturers is our superior quality materials, poised to provide durability with utmost strength, at the most affordable prices. All our car parking shades are designed to provide the highest protection to your vehicle from the sun rays, and are often even substituted for traditional garages.



# ORGANISATIONAL CHART



# OUR PARTNERS



# CERTIFICATION





*Certificate Of Registration*  
Awarded to

**OZONE ME AUTOMATIC DOORS TRADING CO.  
LLC**

at  
P.O.BOX: 91336, WAREHOUSE NO: 06, PLOT NO: 247-289, AL QUSAIS IND 4, DUBAI,  
UAE

Quality Registrar Systems certify that the management system of the above organization has been audited and found to be in compliance with the QRS requirements for registration of the management system standard detailed below:

**ISO 9001:2015**  
Quality Management Systems

Scope of work  
**TRADING OF AUTOMATIC GATE BARRIERS & GATES**

EA 29  
Certificate No: DQU-13023  
Originally Registered: 15 SEP 2019  
Latest Issue: 15 SEP 2019  
Valid up-to: 14 SEP 2022



Quality Registrar Systems





**MANAGING OFFICE ADDRESS:**  
Quality Registrar Systems  
P.O. Box :26826  
United Arab Emirates



WORLD WIDE CERTIFICATION

Tel: +971-2-6714302  
Fax: +971-2-6741449  
www.qrsyst.com

Quality Registrar Systems is accredited by Dubai Accreditation Department (DAC) for the Scope mention on Quality Registrar Systems (QRS) Accreditation Certificate No. CB-037-MS





OZONE ME AUTOMATIC DOORS TRADING CO. L.L.C  
P.O.BOX. 91336, DUBAI, UAE | T. +971 4 228 1621  
E. INFO@OZONEDXB.COM | W. WWW.OZONEDXB.COM